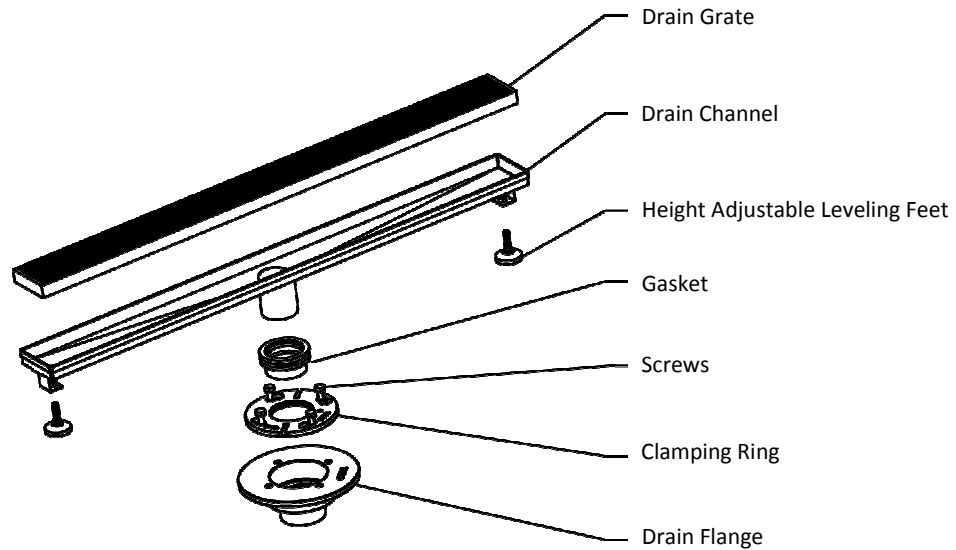




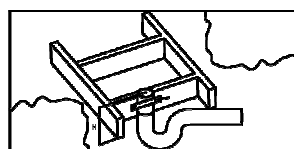
Installation guide

INSTALLATION FOR LINEAR SHOWER DRAINS

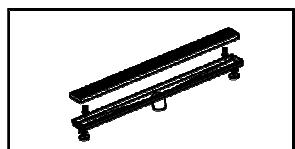
***IMPORTANT:** Recommended for professional installers only. The installer maintains responsibility for installing the product safely.
 *Drawings are for reference only. Please refer to actual product for exact size, shape and parts.



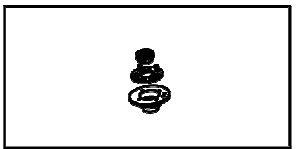
1. Determine the desired position of the shower drain. Relocate rough-in pipework if necessary. Cover with flooring mortar as needed.



2. Assemble the drain grate to the drain channel.

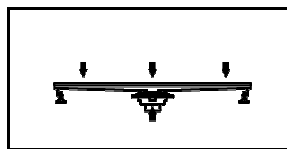


3. Assemble the clamping ring to the drain flange, and then install the gasket into the drain flange. Fasten the assembly with the screws.

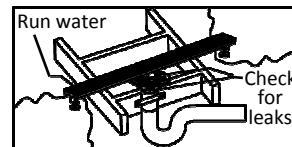
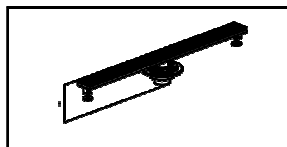


SHOWER DRAIN INSTALLATION INSTRUCTIONS

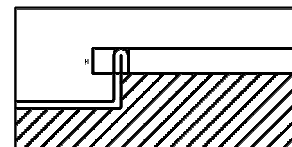
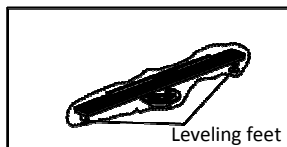
4. Insert the drain channel into the gasket.
Push the drain channel down to ensure the correct height.



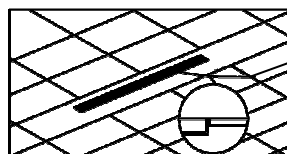
5. Install the drain flange to the rough-in pipe.
Run water through the drain and check for leaks.



6. Adjust the leveling feet to level and stabilize the shower drain unit.
The top of the drain channel should be flush with the surface of the finished floor.



7. Apply a bead of silicone sealant around the outside of the shower drain.
Complete the installation by installing the preferred flooring.



→ Silicone sealant

CARE AND CLEANING GUIDE

Our stainless steel shower drains are designed to minimize cleaning and maintenance. High-pressure flushing is the most effective method of cleaning, and, if performed regularly, will keep the drains clean in most situations. Only use a mild soap and a soft cloth for cleaning. **DO NOT** use any abrasive cleaners or scrub pads. **DO NOT** allow household cleaning agents, such as bleach, sit on your drain cover for a long period of time. In cases where a stainless steel cleaner is necessary, rinse the drains with plenty of water after use.